



Machine Specification and Data Sheet

Machine Packages SIS 5"

	SINGLE GOB		5" DOUBLE GOB		
	B&B	P&B	B&B	P&B	NNPB
Ware Range Reference		H35107		H35108	
Max Body Diameter with VertiFlow through the bed		156 mm		95mm	
Min. Height Under Finish	74mm	74mm	73mm	55mm	
Max. Height Under Finish with VertiFlow	341mm	265mm	325mm	290mm	
Max. Finish Diameter	48mm	120mm	48mm	90mm	38mm
MACHINE FEATURES					
Control System FlexIS SIS		■		■	
Servo Gob Distributor 535		■		■	
Delivery Suspension System DSS		■		■	
Baffle Mech. 200 Series (no Pantograph)		■		■	
Funnel Mech 200 Series one way		N/A		■	
Blowhead 200 Series		N/A		■	
Quick change Plunger Mechanism 62-11016 w/o Sensor		■		■	
Quick change Accessories		N/A		■	
Stack Cooling Blank Side		■		■	
VertiFlow Blowside through the bed		■		■	
Constant Cushion Invert & Take-out Mechanism		■		■	
Conveyor		■		■	
Dual Axis Servo Pusher		■		■	
Deadplate Cooling manual adjustable		■		■	
Automatic Lubrication System		■		■	
Forming Process		■		■	
Blow & Blow		■		■	
Press & Blow		■		■	
OPTIONS					
Vaccum blow side		■		■	
Narrow Neck Press and Blow (NNPB)		■		■	
Hi/Lo Dead Plate		■		■	
Additional 16 outputs		■		■	
FlexIS ECO		■		■	

Note that selection of the options may have an impact on min./max. ware ranges. Please contact Emhart Glass for specific information.

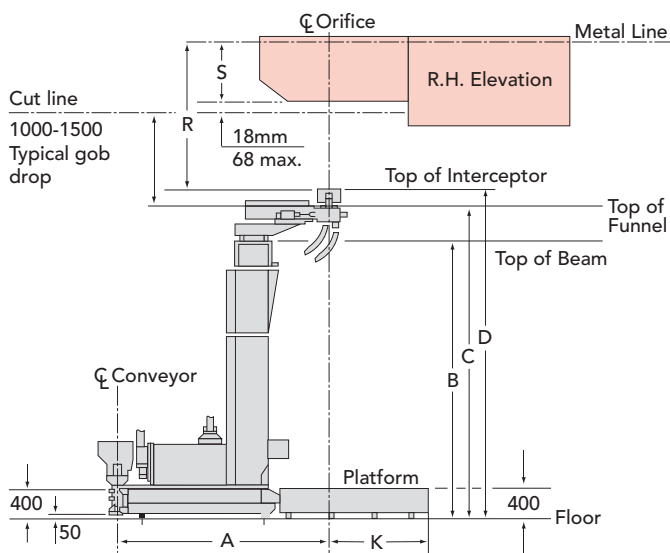
Machine Packages SIS 5"

- Firm standard package specification including: Servo Feeder, Machine, Conveyor with Extension, Ware Transfer, FlexIS SIS Control with Ware Handling Control and one set of Accessories
- Available in 6, 8 and 10 section configurations

Dimension Specifications — SIS Machine Sections

Dimension	Delivery CD	6 mm	8 mm	10 mm
A			2417	2417
B			3302	3524
C	DG 4 3/8		3732	3954
D	DG 4 3/8		3883	4105
E			1159	1159
F			651	651
G			2772	3305
H			5797	6864
I			2779	3312
K			815	817
Machine weight including			kg	kg
Molds and Accessories			37'000	46'000
General Installation			200-12348	200-12350
Layout Drawing				

Machine Packages SIS 5"

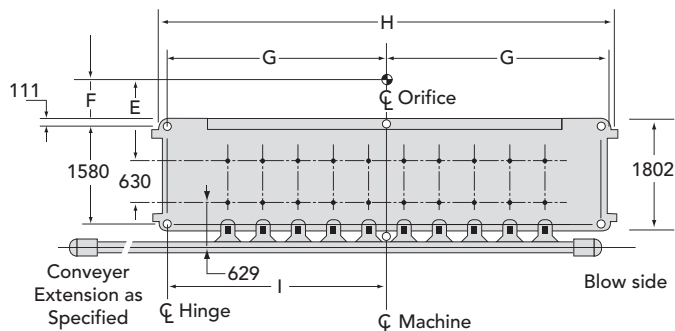


Dimension Specifications for Feeder & Spout

Feeder & Spout	S (mm)		Minimum R (mm)
	Arcuate Shear	Parallel Shear	
555 Std	414	N/A	827
555 Deep	477	N/A	890

OPTIONS

81 Std	324	708	737
81 Deep	375	759	788
503	414	822	827
515	477	889	890





GERMANY, NEUSS

Telephone +49 (2131) 3595 0, Telefax +49 (2131) 3595 125

ITALY, DEGO (SAVONA)

Telephone +39 (019) 51 66 1, Telefax +39 (019) 51 66 302

JAPAN, KAWASAKI

Telephone +81 (44) 222 7371, Telefax +81 (44) 222 4868

MALAYSIA, JOHOR BAHRU

Telephone +60 (07) 863 1122, Telefax +60 (07) 863 7717

RUSSIA, MOSCOW

Telephone +7 (499) 746 13 40, Telefax +7 (499) 746 13 41

SINGAPORE

Telephone +65 6778 1466, Telefax +65 6778 9433

SPAIN, MADRID

Telephone +34 (91) 768 0094, Telefax +34 (91) 383 0235

SWEDEN, ÖREBRO

Telephone +46 (19) 307 500, Telefax +46 (19) 307 501

SWEDEN, SUNDSVALL

Telephone +46 (60) 199 100, Telefax +46 (60) 199 261

UK, MANCHESTER

Telephone +44 (161) 8761 700, Telefax +44 (161) 8761 701

USA, ELMIRA, NY

Telephone +1 (607) 734 3671, Telefax +1 (607) 734 1245

USA, CLEARWATER, FL

Telephone +1 (727) 535 5502, Telefax +1 (727) 532 8513

USA, OWENSVILLE, MO

Telephone +1 (573) 437 2132, Telefax +1 (573) 437 3146

USA, WINDSOR, CT

Telephone +1 (860) 298 7340, Telefax +1 (860) 298 7395

Emhart Glass Worldwide Presence

Principal

Emhart Glass SA

Hinterbergstrasse 22

CH-6330 Cham, Switzerland

Telephone +41 (41) 749 42 00, Telefax +41 (41) 749 42 71

www.emhartglass.cominfo@emhartglass.com

Services (see 200-1760 for detailed specification)

Media	Pressure Bar	Consumption per Section DG Nm ³ /min
Low Pressure Operating Air	2.1	1.0
High Pressure Operating Air	3.1	1.0
Forming Air (B&B)	3.1	2.0
Forming Air (P&B)	3.1	2.8
Vacuum Option	0.15 absolut	0.2 - 0.3
Cooling Air VertiFlow Blowside and Blank Stack	1200mm H ₂ O	55
Conveyor	600mm H ₂ O	10
Lubrication Oil	80	1.3 liter/day
Cooling Water	2.1	15 liter/min

Emhart Glass makes every effort to provide valid, helpful information to its customers so that our equipment will be best utilized. If you encounter information that is not correct or information which can be misunderstood or not understood, please advise Emhart Glass so that we improve this information.

All the above figures are typical values. For project requirements contact Emhart Glass Technical Service.