

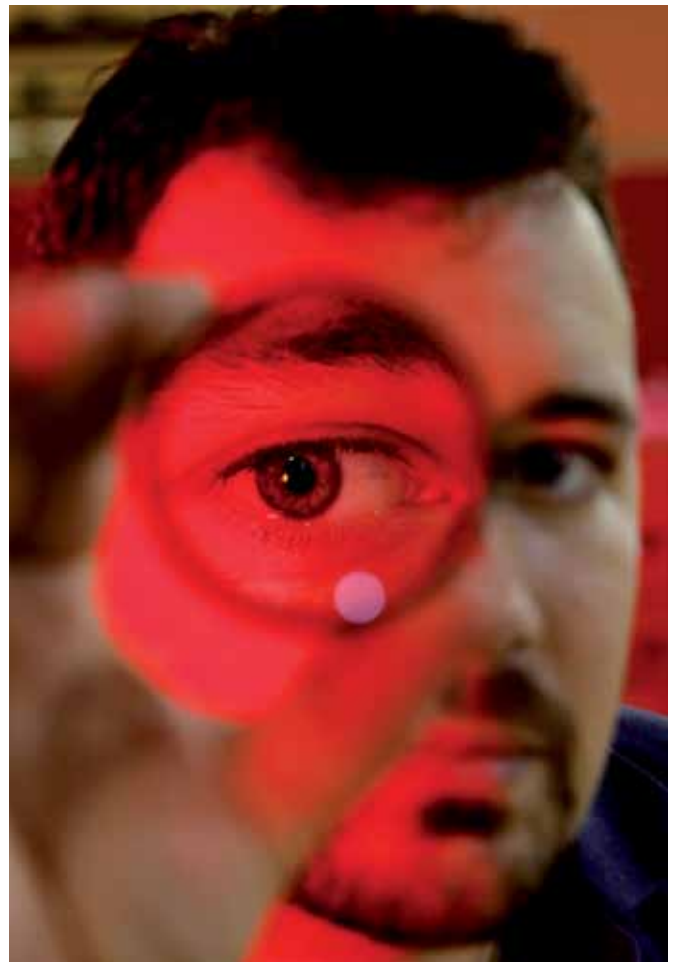


Hot End Audits

With the detailed knowledge of your current equipment condition, your past investments can have the maximum potential.

Emhart Glass can partner your operation with a mechanical, electrical or process auditing program to allow you to identify areas where productivity or machinery life time can be increased.

This expert assessment will allow you to fully capitalize on these past investments and provide you with valuable information for future decisions.



GERMANY, NEUSS

Telephone +49 (2131) 3595 0, Telefax +49 (2131) 3595 125

ITALY, DEGO (SAVONA)

Telephone +39 (019) 51 66 1, Telefax +39 (019) 51 66 302

JAPAN, KAWASAKI

Telephone +81 (44) 222 7371, Telefax +81 (44) 222 4868

MALAYSIA, JOHOR BAHRU

Telephone +60 (07) 863 1122, Telefax +60 (07) 863 7717

RUSSIA, MOSCOW

Telephone +7 (499) 746 13 40, Telefax +7 (499) 746 13 41

SINGAPORE

Telephone +65 6778 1466, Telefax +65 6778 9433

SPAIN, MADRID

Telephone +34 (91) 768 0094, Telefax +34 (91) 383 0235

SWEDEN, ÖREBRO

Telephone +46 (19) 307 500, Telefax +46 (19) 307 501

SWEDEN, SUNDSVALL

Telephone +46 (60) 199 100, Telefax +46 (60) 199 261

UK, MANCHESTER

Telephone +44 (161) 8761 700, Telefax +44 (161) 8761 701

USA, ELMIRA, NY

Telephone +1 (607) 734 3671, Telefax +1 (607) 734 1245

USA, CLEARWATER, FL

Telephone +1 (727) 535 5502, Telefax +1 (727) 532 8513

USA, OWENSVILLE, MO

Telephone +1 (573) 437 2132, Telefax +1 (573) 437 3146

USA, WINDSOR, CT

Telephone +1 (860) 298 7340, Telefax +1 (860) 298 7395

Emhart Glass Worldwide Presence

Principal

Emhart Glass SA

Hinterbergstrasse 22

CH-6330 Cham, Switzerland

Telephone +41 (41) 749 42 00, Telefax +41 (41) 749 42 71

www.emhartglass.cominfo@emhartglass.com**Your solution for unleashing your potentials:**

The tailored audits provided will supply you with detailed expertise allowing you to:

- Maximize the lifetime of your equipment by assessing the current running condition.
- Potentially increase productivity and output based on expert advice and recommendations.
- Make future investment decisions based on factual information.

Scope

The following packages are available for Emhart Glass manufactured equipment:

- Mechanical Hot End equipment audit.
- Electrical Hot End equipment audit.
- Process audit.

Additional non Emhart Glass manufactured equipment may be included in the above audits on request.

Emhart Glass makes every effort to provide valid, helpful information to its customers so that our equipment will be best utilized. If you encounter information that is not correct or information which can be misunderstood or not understood, please advise Emhart Glass so that we improve this information.

All the above figures are typical values. For project requirements contact Emhart Glass Technical Service.