

Technical News Bulletin

Horseheads New York, October 19, 2020



**High speed
FleXinspect M**

- FleXinspect M with increased speed capabilities
- Enabled by non-contact vision gauging
- Proven technology used on the FleXinspect T (10+ years)

FleXinspect M

The FleXinspect M is a stop/rotate servo driven machine designed to be a drop in replacement for many of the well know mechanical machines of the past. With its compact ergonomic design, it is the ideal machine for installations on new or existing production lines.

As forming machines increase the number of sections and cavities, inspection lines and machines are required to operate and at higher speeds.

In order to address the ever-increasing challenges inspection machines face with higher production rates, the FleXinspect M has now incorporated the vision gauging functionality previously used on the FleXinspect T. The non-contact vision gauging option for inspection and control of the plug, ring, dip and saddle is now available for all new FleXinspect M machines.

All FleXinspect M machines are supplied in 12 / 24 pocket, or 9 /18 pocket configurations.

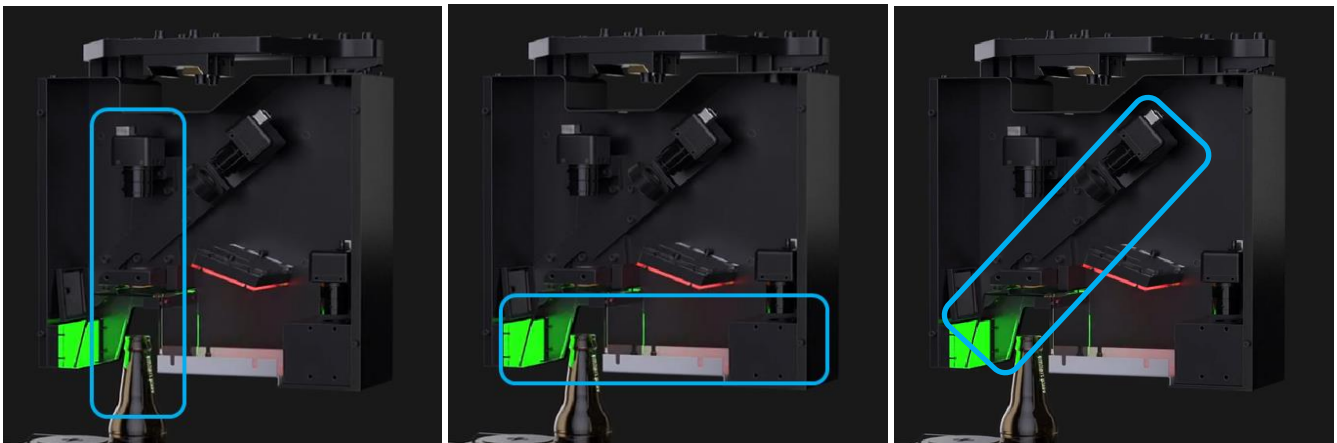
Type of container	# of pockets	Production speed	Burst speed
Beer	24	Up to 330	350
Wine	12	Up to 240	260
Non Round	12	Up to 160	180

Type of container	# of pockets	Production speed	Burst speed
Beer	18	Up to 300	320
Wine	9	Up to 200	220
Non Round	9	Up to 140	160

Note: Listed speed specifications apply when inspecting with optical gauging devices only

Both solutions – mechanical and non-contact vision gauging inspections – are available options for the FleXinspect M. Customers can choose either solution or a combination of both to best match the production needs.

New Solution Vision Plug, Vision Ring, Vision Dip (Saddle / Height)



Solution

Benefits

Vision Plug, Ring, Dip / Saddle

100% non-contact gauging reduces the chance of contamination or damage to the finish
 Allows for higher machine speeds with improved inspection accuracy
 Reduces required maintenance & finish specific change parts

Vision Plug, Ring, Dip / Saddle used with Mechanical plug gauging

Allows for the control of the corkage dimensions (min / max) with a short stroke mechanical gauge that minimizes the effect the overall machine speed
 Provides optical inspection deep into the neck (up to 140mm) to ensure that the filling tube is not obstructed when inserted into the bore

Vision Plug, Ring, Dip / Saddle used with Mechanical dip gauging

Allows for easy conversion when switching between narrow neck articles and wide mouth articles