



The comprehensive inspection solution offering versatility, value, and flexibility

FleXinspect T



Complete cold end inspection

The FleXinspect T gives glass manufacturers a total inspection solution, as the fully equipped system is capable of providing all the necessary cold end inspections. The unique design of the servo-driven handling devices allows inspections that in the past were not possible with rotary inspection machines.

As a component of the FleXinspect family, the FleXinspect T can be used in concert with the other FleXinspect machines to create the most comprehensive inspection solution in today's market.

Reduced line space and maintenance

- Multi-function configurations reduce the total number of machines per inspection leg
- High speed machinery reduces the number of inspection legs per forming line
- Significant maintenance and labor savings due to fewer inspection machines in the production area

Higher speeds and larger ware

- Starwheel design allows higher speeds on large diameter containers
- Flexible starwheel pocket configurations maximize throughput (BPM)
- Synchronized servo technologies optimize overall machine efficiency

Non-contact vision gauging (plug, ring, dip)

- Elimination of possible contamination or damage to the finish
- High speed operation with improved accuracy
- Simple and quick setup

Precise container rotation

- Servo-driven rotator with modular design for improved operation
- Servo technologies providing rotation performance feedback
- Modular design allows maximum setup flexibility



FleXinspect T

- Reduced line space and maintenance
- Higher speeds and larger ware
- Precise container rotation
- Non-contact vision gauging (plug, ring, dip)

A reliable and uniquely configurable platform that easily allows additional inspection functionality and redundancy as needed. The FleXinspect T provides unmatched modular versatility, value, and flexibility for glassmakers' current and future requirements.



FleXinspect is powered by SCOUT technology that enables new levels of automation, performance and simplicity. SCOUT is the foundation that will support future advancements in hollow glass inspection.



Features

- All inspections in one machine capability
- Modular/expandable inspection systems
- Cavity correlation of all defects
- Non-contact gauging for the finish
- Integrated inspection conveyors
- Brushless non-round container handling
- Traceability of change (who, what, when)
- 840 mm servo-driven starwheel
- 5 modular servo-driven rotation devices
- Servo-driven infeed screws
- Servo-driven starwheel
- Live belt outfeed handling system
- SCOUT technology

Standard inspections

- Modulated check detection
- Mold number reader - Heel code
- Vision plug/ring/dip/saddle/height

Additional inspections

- Wall thickness - 4 elevations
- 2 point out of round (2 positions)
- Mechanical plug/ring
- Mechanical dip/saddle/height
- Vision mold number reader - Alpha numeric/bottom dots
- Sidewall/Sidewall stress
- Base/Base stress
- Sealing surface/Wire edge
- Dimensional (height, diameter, lean)
- Tramp glass
- Vision check



Ware range

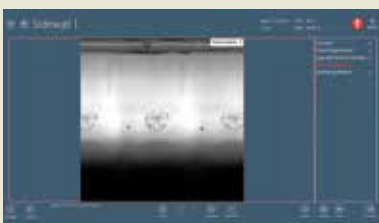
- Height: 35 mm - 381 mm (450 mm option)
- Body diameter: 16 mm - 170 mm

Machine speed

Pockets	Max. dia.	Stations	Max. speed
36	53 mm	19	400 BPM
30	66 mm	16	400 BPM
24	79 mm	13	370 BPM
18	107 mm	10	320 BPM
12	152 mm	7	270 BPM
9	170 mm	5	140 BPM

Production speed guidelines 24x7x365			
Beer	Wine	Baby food	Non round
260-330	210-250	270-340	120-220

Burst speeds			
350	270	350	N/A



Flex T Upper Sidewall
Improved inspection performance with linear scan technology



Flex T Glass Thickness
Graphical user interface for fast, repeatable setups



Flex T Statistics
Detailed statistics for inspections and defect types detected

Specifications

Power requirements

380 to 480 VAC, 3 Phase, 25 Amps

NOTE: Transformer required for any other voltage.

Air requirements

Minimum 3.5 bar nominal [50 psi]
 Maximum 0.8 to 0.85 m3/minute

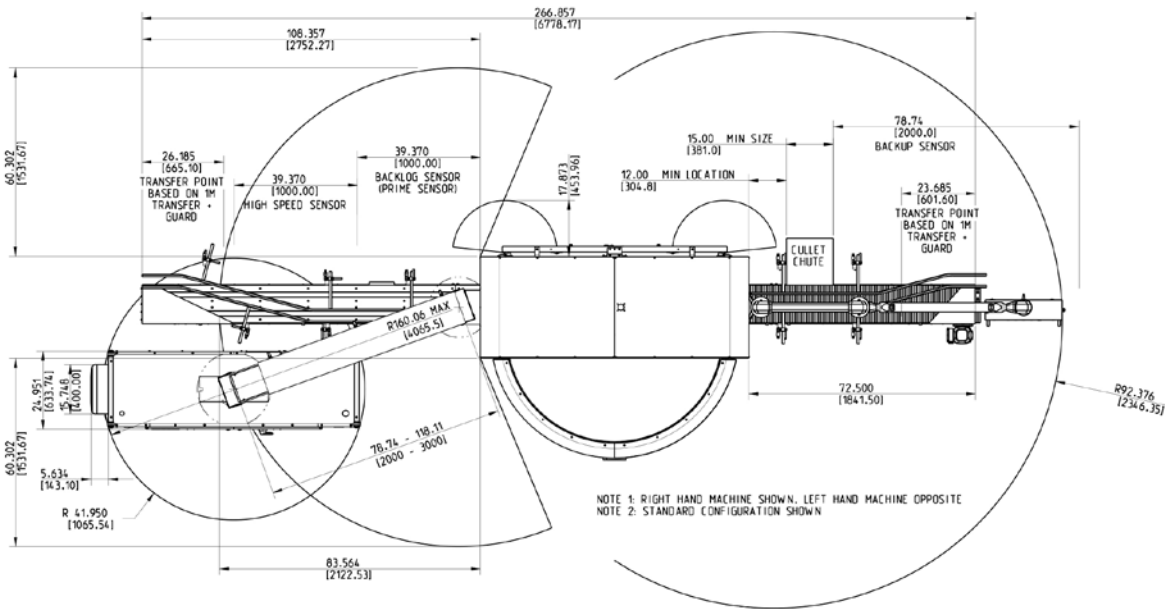
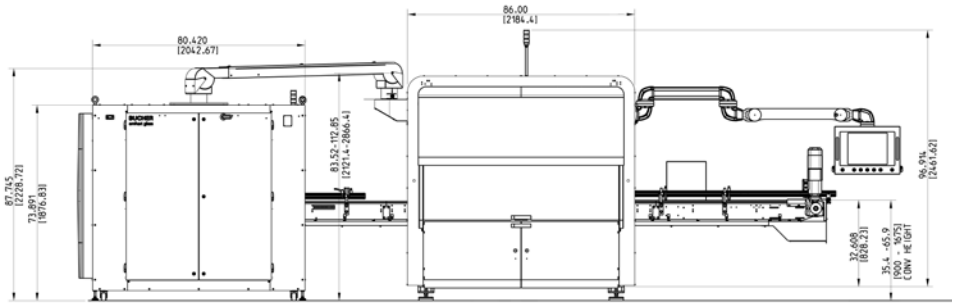
Environmental considerations

Temperature maximum 50 °C [122 °F]
 Relative humidity Max. 95% relative humidity (non-condensing)

Machine speed

Maximum of 400 bpm
 Minimum of 60 bpm

(Speed is affected by container dimensions, shape, starwheel configuration, and plug penetration)



Specifications are subject to change. Actual performance depends on specific application, container size, and line speed. Dimensions represent nominal machine size and are not for installation purposes.

Emhart Glass Worldwide Presence

Principal
 Emhart Glass SA
 Hinterbergstrasse 22
 CH-6312 Steinhausen, Switzerland
 Tel. +41 41 749 42 00 Fax +41 41 749 42 71

Leipzig Germany

Tel. +49 341 250773 20 Fax +49 341 250773 21

Savona Italy

Tel. +39 019 51 66 1 Fax +39 019 51 66 301

Kawasaki Japan

Tel. +81 44 222 7371 Fax +81 44 222 4868

Johor Bahru Malaysia

Tel. +607 863 1122 Fax +607 863 7717

Singapore

Tel. +65 6778 1466 Fax +65 6778 9433

Örebro Sweden

Tel. +46 19 307 500 Fax +46 19 307 501

Sundsvall Sweden

Tel. +46 60 199 100 Fax +46 60 199 261

St. Petersburg FL USA

Tel. +1 727 471 1113 Fax +1 727 471 1290

Elmira NY USA

Tel. +1 607 735 2600 Fax +1 607 735 2601

Windsor CT USA

Tel. +1 860 298 7340 Fax +1 860 298 7395

Owensville MO USA

Tel. +1 573 437 2132 Fax +1 573 437 3146

Perrysburg OH USA

Tel. +1 567 336 7733 Fax +1 567 336 8727